



SNOWFLAKE PLACE

FOR CHILDREN AND YOUTH



ANNUAL REPORT 2016-2017





WHEN THEY'RE READY TO TELL, WE'RE READY TO LISTEN

Our Mission

Snowflake Place for Children and Youth provides multi-system collaboration in child abuse investigations, ensuring that children, youth and their families receive support and services in a safe, neutral, family-friendly setting.

Our Vision

That all Manitoba children and youth who have been physically or sexually abused or exploited have access to child focused, culturally competent services in which service providers work together to meet their needs in a caring, holistically supportive manner to promote strength and healing.



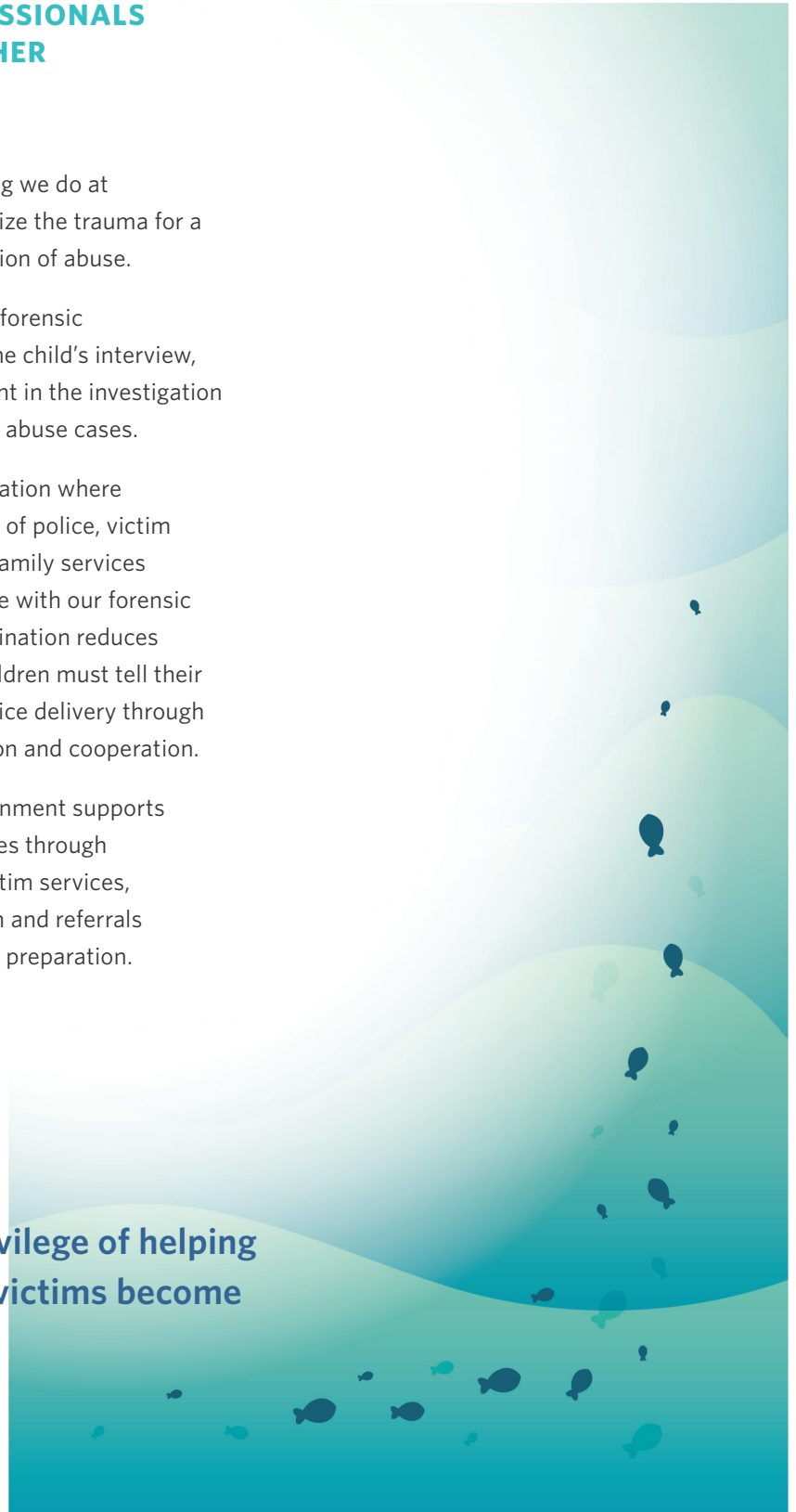
A TEAM OF PROFESSIONALS WORKING TOGETHER FOR EACH CHILD

We've designed everything we do at Snowflake Place to minimize the trauma for a child disclosing an allegation of abuse.

- Our highly trained child forensic interviewers carry out the child's interview, which is a key component in the investigation and prosecution of child abuse cases.
- We offer one central location where a multidisciplinary team of police, victim services, and child and family services professionals collaborate with our forensic interviewers. This coordination reduces the number of times children must tell their story and improves service delivery through increased communication and cooperation.
- Our collaborative environment supports children and their families through immediate access to victim services, who provide information and referrals to counselling and court preparation.

"What inspires me is having the privilege of helping children who were once voiceless victims become strong survivors."

Snowflake Place forensic interviewer



MESSAGE FROM THE EXECUTIVE DIRECTOR

September 2017

It remains a great privilege to be part of this amazing organization. Each time children and youth come through our door despite the many daunting emotions they feel, I wonder where they find the courage and strength to do so. It continues to inspire and encourage me.

Each year, we see more children at Snowflake Place for Children and Youth, and they are now coming from throughout Manitoba. As the lead investigator into a serious child abuse allegation, one RCMP officer drove hours across the frozen prairie to get to us. The investigator knew that our centre was the best place for the child's interview and so made the long trek to have it done here.

A few highlights from this past year include the addition to our team of Milan, who is a support dog. Milan has proven to have a remarkable calming influence on children and families who

visit our centre during a time of high anxiety. We've also welcomed a group of volunteers who assist us in countless ways and always with energy and enthusiasm. Our centre now has a new, more child-friendly interior with walls featuring soothing colours for a warmer environment.

As we look to our fifth anniversary next year, I feel proud of our continued progress and growth. None of it would be possible without our partners and the support of our funders and donors. Together we are reaching more children and youth who need our help along their path from trauma to triumph over victimization.

I am grateful for the team that surrounds me—our staff and board who show unwavering strength and dedication to our cause. We can and will do more. There are many more children who need us.

With thanks,



Cheryl Martinez
Executive Director

MESSAGE FROM THE BOARD CHAIR

It has been a gratifying year for all of us at Snowflake Place for Children and Youth. As our young organization matures, we are beginning to more deeply understand the impact our unique service is having on the children and families who come to us. We are now seeing children and youth who have benefited from being interviewed at our centre complete the court process and move ahead with their young lives.

We continue to strive to be the very best we can be. Ongoing research in the areas of childhood victimization and trauma means that our forensic interviewers must continually improve techniques and hone their skills to improve outcomes.

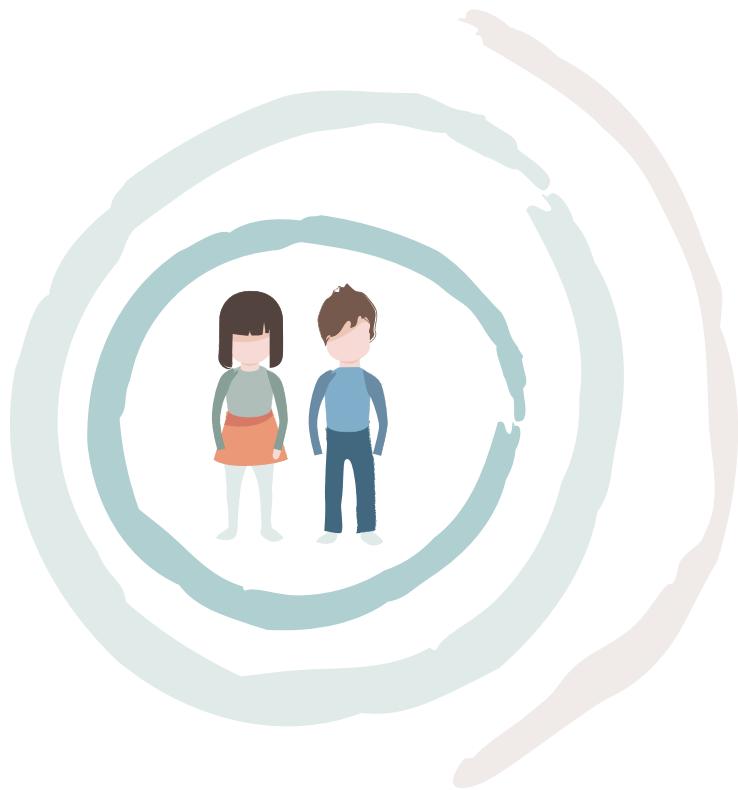
Our focus in the coming years will turn to Snowflake's long-term sustainability and expansion. We are always looking for opportunities for greater integration of our services with others that serve child victims of abuse. We are working hard to engage the community and create new partnerships with funders and donors. These efforts are crucial to our mission—giving children and youth a safe place to tell their story and begin their journey towards healing and hope.



Regan Spencer
Board Chairperson



WHEN A CHILD TELLS



It takes great courage for a young person to tell someone when abuse has occurred. What happens after that can have a big impact on that child's well-being and ability to move past the trauma. What Snowflake Place offers is a coordinated, child-centered setting and approach that reduces the number of times a child has to be interviewed.



Without Snowflake Place

After suffering several months of sexual abuse by her uncle, eight-year-old Sarah told her teacher about it. The teacher consulted the school's guidance counsellor, who talked to Sarah further to find out more.

The guidance counsellor contacted child and family services (CFS). A CFS social worker attended the school to interview Sarah about her abuse disclosure. The CFS social worker contacted Sarah's mother who rushed to her daughter's school. Sarah began to feel anxious and frightened about what was happening and how upset her mother was. Sarah's mother tried to comfort her, but was shocked, confused, and angry about the uncle's actions.

The CFS social worker made a report to the police, who arranged to interview Sarah at the police station. Even though Sarah went to the station with her mom, she was scared. All the police in uniforms and the busy station had her wondering if she had

done something wrong. She was beginning to regret she told anyone about what happened.

Sarah also had to visit a special clinic at the hospital for an examination to see if she suffered physical damage and to gather any medical evidence. Sarah had to tell her story several times in the days after she decided to tell her teacher. She and her mom had to find their way to unfamiliar locations at different times. It was all very stressful with a lot of information to keep track of and some of it didn't make sense.



With Snowflake Place

After the CFS social worker attended Sarah's school, she made a report to the police.

The police officer contacted Snowflake Place and scheduled an interview there for later in the day. The CFS social worker contacted Sarah's mom to let her know what was happening and accompanied her and Sarah to the interview.

Sarah and her mother felt anxious and upset upon their arrival, but began to feel more settled once seated in Snowflake's quiet and comfortable family room. Sarah coloured pictures while they waited. The forensic interviewer, police officer, CFS social worker and victim services worker met in the meeting room to share information and plan for the interview.

The forensic interviewer then met with Sarah and her mother. She showed them the interview room where she and Sarah would be talking. The CFS social worker and police officer observed the interview from monitor-

ing stations while Sarah's mom waited in the family room.

After the interview, the CFS social worker, police officer, and victim services worker met to plan for next steps. The CFS social worker and police officer then met with Sarah and her mom to explain everything and answer any questions. The victim services worker then talked with Sarah and her mom about supportive services, including counselling. They also met Milan, a Labrador retriever service dog. Sarah patted Milan and started to feel more calm and so did her mom.

At the end of their visit to Snowflake Place, Sarah got to choose a small item to take home to recognize the courage she showed in telling her story. She left feeling proud of herself. Even though it was difficult for both of them, Sarah and her mom felt confident about moving forward and knew the next steps to come.

Although these stories illustrate the types of experiences children and families have when there is an abuse disclosure, they are not based on actual cases.

SUMMARY OF INITIATIVES & ACTIVITIES

Information Session on New Legislation

We hosted an information session provided by the Manitoba Government to introduce the Protecting Children (Information Sharing) Act. The new legislation aims to improve information sharing between police, CFS, and schools when it is in the best interests of children. Premier Brian Pallister, Families Minister Scott Fielding, Manitoba service providers, and former NHL star and abuse survivor and advocate Sheldon Kennedy participated in the event.

A Special Addition to the Snowflake Team

We were thrilled with the addition of an assistance dog to our team. Milan is a black Labrador retriever who helps children and families visiting our centre with her calm and friendly presence. She is also present to support children who go on to give testimony in court. Milan works for Manitoba Justice Victim Services and was trained by the Pacific Assistance Dog Society.

CAC Network Activities

Snowflake Place delivers services based on the children's advocacy center (CAC) model. We are the only CAC

in Manitoba, but there is a growing network across Canada.

Staying current on best practices and techniques is critical to maintaining the exceptional skill level of our interviewers. Through the National Children's Alliance and the Midwest Regional Children's Advocacy Centre, we have accessed ongoing training and webinars, and our interviewers attended the Alliance's national conference.

Raising Awareness

Although we have helped close to 1,000 children and youth since we opened in 2013, we know there are many more who would benefit from our services. We continually reach out to organizations, attend meetings and conferences, and host tours at our centre to raise awareness about our role in child abuse investigations.

Presentations

- Southern First Nation Network of Care Agency Relations Meeting
- Northern First Nations Child and Family Services Authority Agency Relations Meeting
- Manitoba Foster Family Network Conference
- Child Abuse Investigator's Course — Winnipeg Police Service

- Team Investigation of Child Physical and Sexual Abuse Course — RCMP and Child and Family Services
- Child Abuse Coordinator Conference

Tours

- Candace House
- Project Linus
- Disney Store Polo Park
- Imperial Order Daughters of the Empire (IODE)
- Robertson College
- St. James Collegiate, Transcona Collegiate, and Immigrant and Refugee Community Organization of Manitoba (IRCOM) — Youth in Philanthropy Committees

Visits from Officials

- Scott Kolody, RCMP, Commanding Officer, D Division
- Jacqueline Genaille, Chief of Police, Dakota Police Service

Sustaining our Work

Winnipeg Foundation

We received grant funding from The Winnipeg Foundation to help us create a fund development plan and case for support. With the assistance of a consultant, we now have a 3-year plan and case that strengthen our ability to generate revenue to sustain and grow our services.

We also received a Youth in Philanthropy grant from students at the Immigrant and Refugee Community Organization of

Manitoba and Transcona Collegiate. This grant went towards the small items we present to children to recognize the difficult task of telling their story to our interviewers.

Justice Canada Victim Fund

Thanks to a grant from Justice Canada's Victims Fund we developed informational brochures to help families understand our process when they visit the centre. We also developed an awareness brochure for the community. Finally, we were able to make our space more welcoming with interior décor changes. This project was also supported by interior designer Monique Milne of Well Dressed Homes.

Winnipeg Police Service Endowment Fund

Our busy downtown location makes us central, but street parking can be a challenge. With a grant from the Winnipeg Police Service Endowment Fund, we can now offer free parking at a lot adjacent to our building.

Snowflake Place Pool Tournament

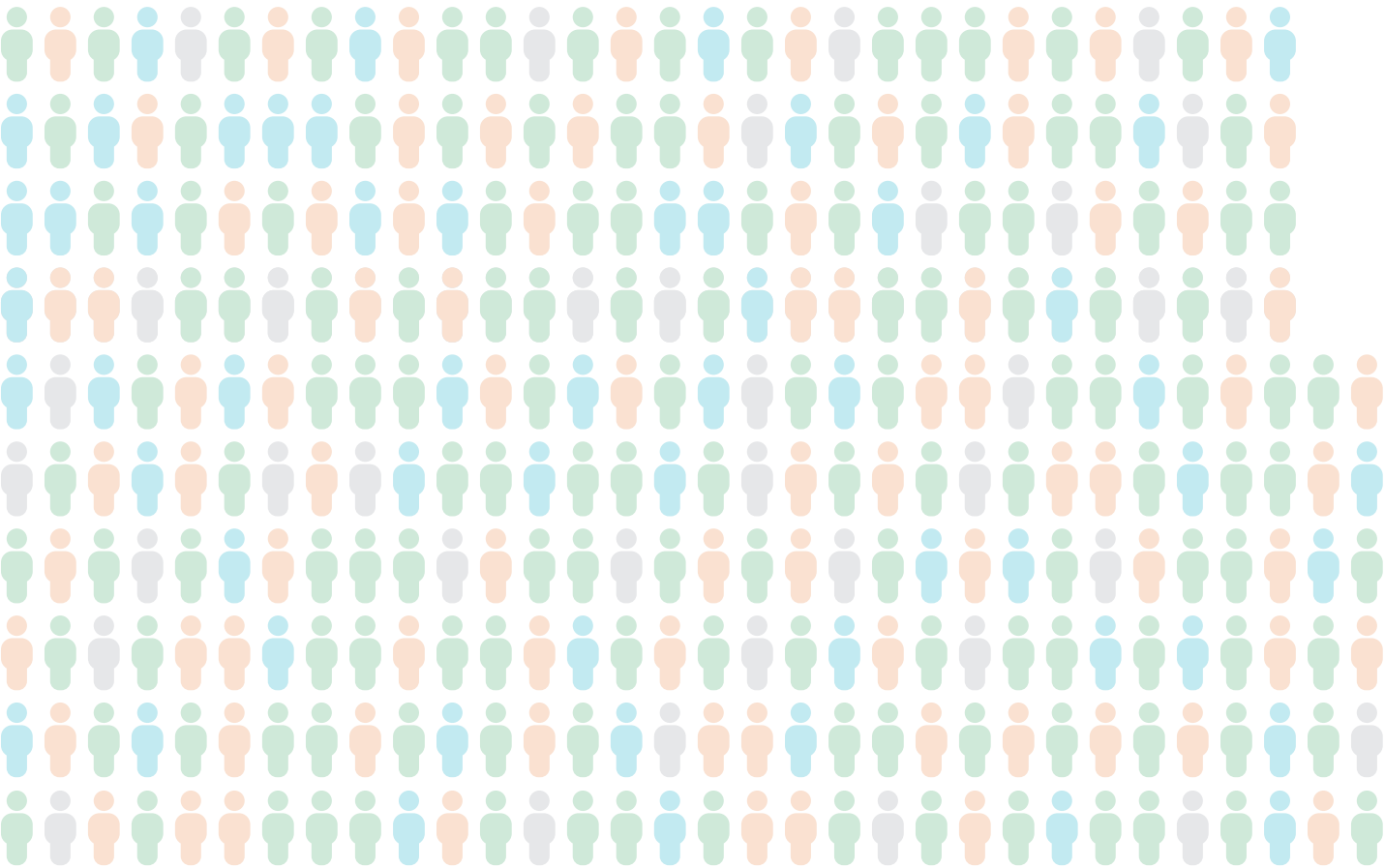
We hosted a successful pool tournament that raised \$10,000. We are immensely grateful to our event sponsors, donors, and the capacity crowd that came out to support us!

Volunteer Recruitment

We added volunteers to our team this year to assist with fund development and general office administration.

WHO WE SUPPORTED IN 2016-2017

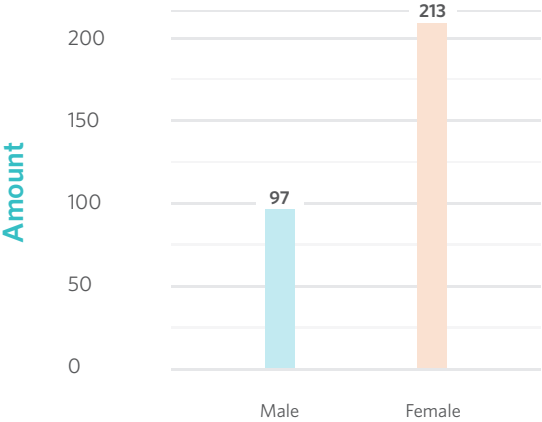
Total Children and Youth Supported: 310 (Total supported since 2013: 983)



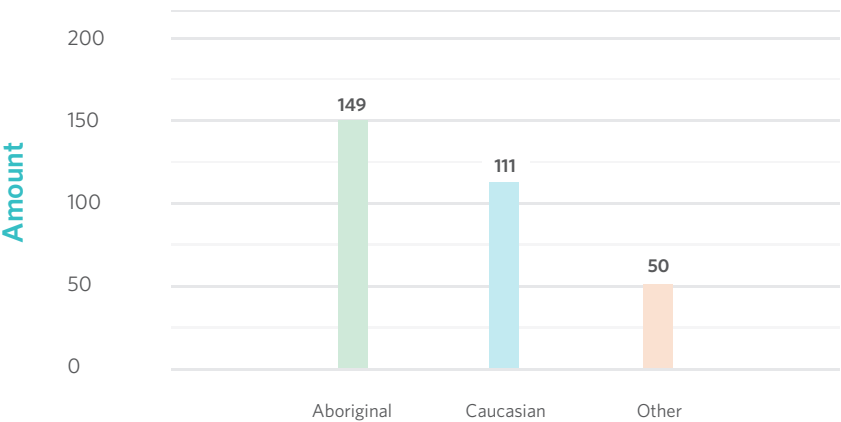
Average Age: 9 Years



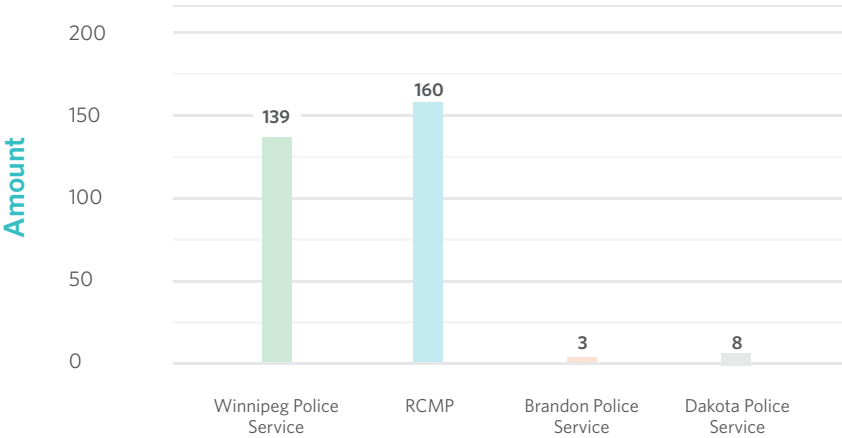
Self-Identified Gender



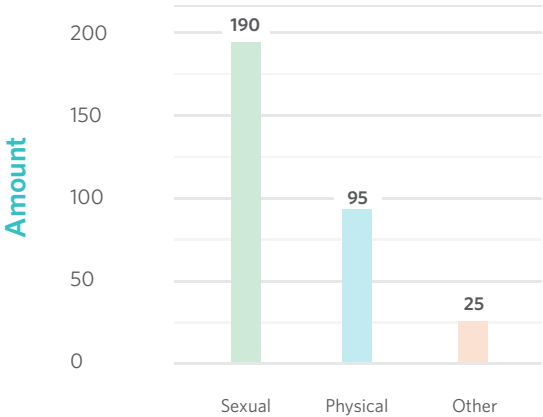
Self-Identified Ethnicity



How Cases Reach Snowflake Place



Types of Alleged Offences



Statement of Operations and Changes in Net Assets
Year Ended March 31, 2017

	2017	2016
Revenue		
Provincial funding (Note 6)	\$ 396,473	435,540
Federal funding (Note 6)	86,122	175,000
The Winnipeg Foundation	11,256	15,044
Donations	7,640	3,953
Fundraising	11,890	17,545
Interest income	2,528	45
	<hr/> 515,909	<hr/> 647,127
Expenses		
Amortization of tangible capital assets	22,853	22,853
Association dues and memberships	982	657
Bank charges and interest	573	239
Computer and electronics	8,094	6,073
Fundraising	4,653	4,666
Insurance	6,227	4,449
Occupancy costs	73,100	73,100
Office and supplies	5,141	4,906
Operations	9,996	4,302
Parking	940	758
Professional services	23,208	22,271
Staff training and development	8,769	19,559
Telephone and internet	5,581	6,016
Toy Vault	5,556	5,376
Travel	4,871	10,238
Wages and benefits	372,727	360,226
	<hr/> 553,271	<hr/> 545,689
Excess (Deficiency) Revenue Over Expenses	(37,362)	101,438
Net Assets, Beginning of Year	<hr/> 443,692	<hr/> 342,254
Net Assets, End of Year	<hr/> \$ 406,330	<hr/> 443,692

OUR TEAM

The founding members of Snowflake Place recognize that child abuse is a community problem. No single agency or discipline has all the necessary knowledge, skills, or resources to provide all the intervention services abused children and their caregivers require and deserve.

Member Representatives

Manitoba Department of Families
 Manitoba Department of Justice
 Winnipeg Police Service
 Royal Canadian Mounted Police
 Winnipeg Regional Health Authority
 Child and Family Services Authorities

Board of Directors

Chair: Regan Spencer, Winnipeg Regional Health Authority
 Vice Chair: Sergeant Janelle Bird, Royal Canadian Mounted Police
 Secretary: Kelly Wozney, Child and Family Services Authorities
 Treasurer: Amber Vialette, Manitoba Families

Directors

Dr. Joan Durrant, University of Manitoba
 Diva Faria, Child and Family Services Authorities
 Inspector Kelly Dennison, Winnipeg Police Service
 Sheila Hutton, Winnipeg Regional Health Authority
 Corrine Scott, Manitoba Justice
 Debra Baker, Manitoba Justice

Staff

Cheryl Martinez, Executive Director
 Marni Carlson, Executive Assistant
 Michael Chiborak, Child Forensic Interviewer
 Theresa Pickering, Child Forensic Interviewer

OUR PARTNERS



Winnipeg Regional Health Authority
 Office régional de la santé de Winnipeg
Caring for Health À l'écoute de notre santé



FIRST NATIONS OF
 NORTHERN MANITOBA
 CHILD & FAMILY SERVICES AUTHORITY





**"The moon loved the sun
so much he ran away
to let her shine."**

Snowflake Place child

OUR FUNDERS



Department of Justice
Canada

Ministère de la Justice
Canada



